



What is PGP Desktop?

PGP Desktop provides comprehensive security for desktops and laptops, making it possible for enterprises, workgroups, and individuals to protect sensitive information without changing the existing IT infrastructure or disrupting work processes. This award winning, easy-to-use solution encrypts email, files, virtual volumes, and entire disks from a single desktop application.

The PGP Desktop family of applications have been combined into several bundles.

- **PGP Desktop Professional 9.6** includes PGP Desktop Email and PGP Whole Disk Encryption
- **PGP Desktop Storage 9.6** includes PGP Whole Disk Encryption and PGP NetShare
- **PGP Desktop Enterprise 9.6** includes PGP Desktop Email, PGP Whole Disk Encryption, and PGP NetShare

PGP Desktop Email

You can use PGP Desktop Email to automatically and transparently encrypt, sign, decrypt, and verify email messages through policies you defined for you by administrators, or policies you control if you are not part of a PGP Universal-managed environment.

PGP NetShare

You can use PGP NetShare to let authorized users share protected files in a shared space—such as a file server, shared folder, or USB removable drive.

PGP Whole Disk Encryption

You can use PGP Whole Disk Encryption (WDE) to lock down the entire contents of your system or an external or USB flash drive you specify.

In addition, PGP Desktop lets you do the following:

- Use part of your hard drive space as an encrypted virtual disk volume with its own drive letter.
- Create protected Zip archives.
- Put files and folders into a single encrypted, compressed package that can be opened on Windows systems that do not have PGP Desktop installed.

New to PGP Desktop?

Use this step-by-step guide to get started. You will find that, with PGP Desktop, protecting your data will be as easy as turning a key in a lock.

- This *Quick Start Guide* will help you install PGP Desktop.
- The *PGP Desktop User's Guide* can provide you with more detailed information on PGP Desktop. In it, you will learn what a keypair is, why you might want to create one, how to create one, and how to exchange keys with others so you can encrypt your own data and share data securely with others.
- For deployment, management, and policy enforcement information for PGP Desktop, refer to the *PGP Universal Administrator's Guide*.

Contents

■ What is PGP Desktop?	1
■ What Am I Installing?	1
■ Understanding the Basics	2
■ Installing PGP Desktop	4
■ Starting PGP Desktop	3
■ The PGP Desktop Main Screen	5
■ Using PGP Desktop Email	6
■ Was My Message Encrypted?	6
■ Using PGP NetShare	6
■ Creating PGP Virtual Disk Volumes	9
■ PGP WDE Best Practices	10
■ Using PGP WDE to Whole Disk Encrypt a Drive	16
■ Creating a PGP Zip Archive	17
■ Shredding Files	18
■ Shredding Free Space	6
■ For More Information	6

Icon Conventions



Note



Caution

- Completely destroy files and folders so that nothing can recover them.
- Securely erase free space on your drives so that your deleted data is truly unrecoverable.

System Requirements

- Windows Vista (32-bit versions), Windows XP (SP 1 or 2), Windows 2000 (SP 4), and Windows 2003 Server (SP 1) (PGP WDE is not supported on Windows 2000 and Windows 2003 Server.)
- 128 MB RAM (256 MB recommended).
- 64 MB hard drive space.

What Am I Installing?

PGP Desktop uses licensing to provide access to the features you purchase. Depending on the license you have, some or all of the PGP Desktop family of applications will be active.

This document contains instructions for viewing the features activated by your license.



PGP Desktop Email is a member of the PGP Desktop family of applications. You can use PGP Desktop Email to automatically and transparently encrypt, sign, decrypt, and verify email messages through policies you control. You can also use PGP Desktop Email to encrypt IM sessions for clients such as AIM and iChat. Both users must have PGP Desktop Email enabled.



PGP NetShare is a member of the PGP Desktop family of applications. You can use PGP NetShare to authorize users to share protected files in a shared space, such as on a corporate fileserver, in a shared folder, or on a removable media such as a USB drive. The encrypted files in the Protected Folder continue to appear as normal application files to the authorized users; anyone else with physical access to the files can see them but not use them.



PGP Whole Disk Encryption (WDE) is a member of the PGP Desktop family of applications. You can use PGP WDE to lock down the entire contents of your system or an external or USB flash drive you specify. Boot sectors, system files, and swap files are all encrypted. Whole disk encrypting your boot drive means you do not have to worry if your computer is lost or stolen: to access your data, an attacker would need the appropriate passphrase.

Other components of PGP Desktop that are included with PGP Desktop Email:



PGP Virtual Disk volumes — Uses part of your hard drive space as an encrypted virtual disk volume with its own drive letter. You can create additional users for a volume so that people you authorize can also access the volume. A PGP Virtual Disk is the perfect place for storing your sensitive files; it is as if you have stored them in a safe. When the door of the safe is open (when the volume is mounted), you can change files stored in it, take files out of it, and move files into it. Otherwise (when the volume is unmounted), all the data on the volume is protected.



PGP Zip — Adds any combination of files and folders to an encrypted, compressed, portable archive. PGP Desktop must be installed on a system to create or open a PGP Zip archive. PGP Zip is a tool for securely archiving your sensitive data, whether you want to distribute it to others or back it up.

PGP Self-Decrypting Archives (SDAs) — Puts files and folders into an encrypted, compressed package that can be opened on a Windows system that does not have PGP Messaging or PGP Desktop installed. SDAs are the perfect solution for securely exchanging files with someone who does not have PGP software installed.



PGP Shredder — Completely destroys files and folders so that even file recovery software cannot recover them. Deleting a file using the Windows Recycle Bin does not actually delete it; it sits on your drive and eventually gets overwritten. Until then, it is trivial for an attacker to recover that file. PGP Shredder, in contrast, immediately overwrites files multiple times. This is so effective that even sophisticated disk recovery software cannot recover these files. This feature also completely wipes free space on your drives so your deleted data is truly unrecoverable.



Key Management — PGP Messaging also manages PGP keys, both your keypairs and the public keys of others. You use your private key to decrypt messages sent to you encrypted to your public key and to secure your PGP Virtual Disk volumes. You use public keys to encrypt messages to others or to add users to PGP Virtual Disk volumes.

Understanding the Basics

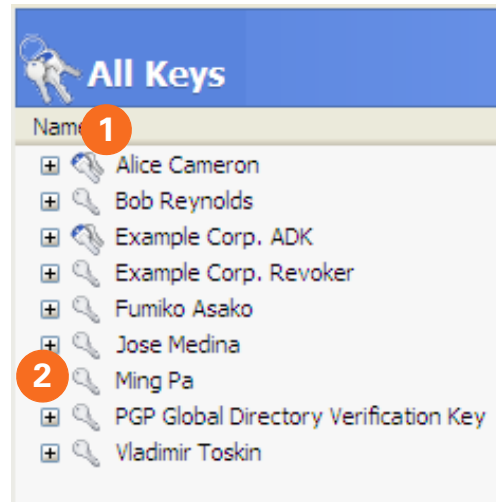
PGP Desktop uses keys to encrypt, sign, decrypt, and verify your messages.

After installation, PGP Desktop prompts you to create a PGP keypair. A keypair is the combination of a private key and a public key.

- Keep your **private key** and its passphrase private, as the name suggests. If someone gets your private key and its passphrase, they can read your messages and impersonate you to others. Your private key decrypts incoming encrypted messages and signs outgoing messages.
- Your **public key** you can give to everyone. It does not have a passphrase. Your public key encrypts messages that only your private key can decrypt and verifies your signed messages.

Your keyring holds both your keypairs and the public keys of others, which you use to send encrypted messages to them. Click the PGP Keys Control Box to see the keys on your keyring:

- 1 The icon for a PGP keypair has two keys, denoting the private and the public key. Alice Cameron has a PGP keypair in this illustration, for example.
- 2 The icons for the public keys of others have just one key. Ming Pa's public key, for example, has been added to the keyring shown in this illustration.



Installing PGP Desktop

The installation process requires a system restart.

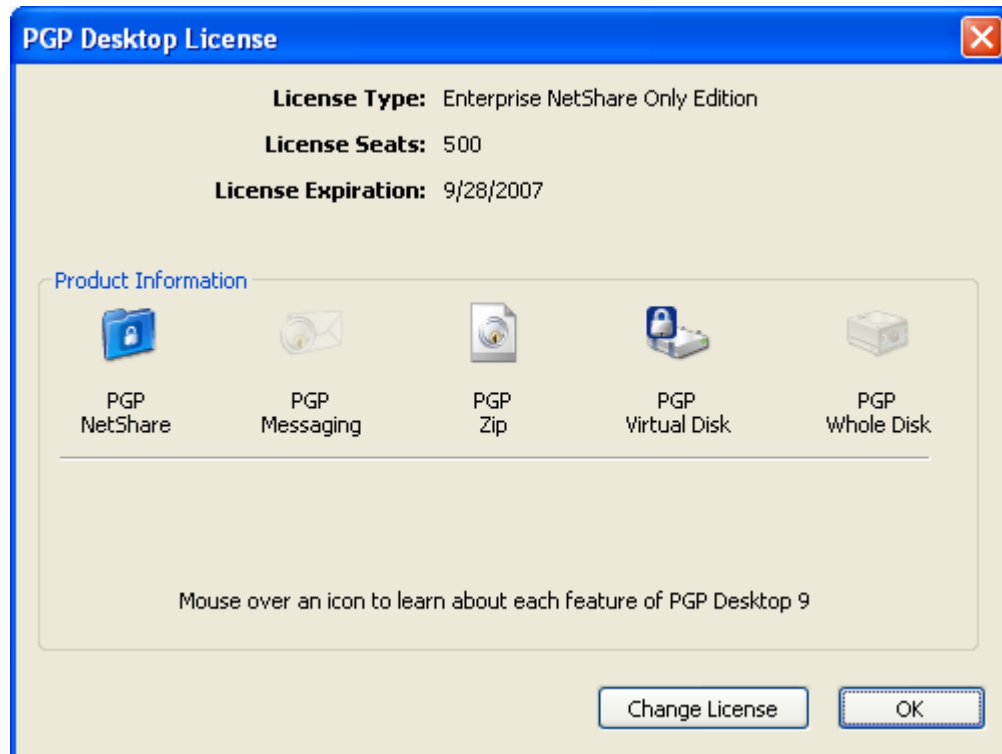
PGP Corporation recommends exiting all open applications before you begin the install.



If you are using PGP Desktop in a PGP Universal-managed environment, your PGP Desktop installer may be configured with specific features and/or settings.

To install PGP Desktop:

- 1 Locate the PGP Messaging installer program.
The installer program may have been distributed by your PGP administrator using the Microsoft SMS deployment tool.
- 2 Double-click the installer.
- 3 Follow the on-screen instructions.
- 4 Reboot your system when instructed.
- 5 When your system restarts, follow the on-screen instructions to configure PGP Desktop.



To see what features your PGP license supports, open PGP Desktop and from the Help menu, select License. Those features with a green checkmark are supported by the active license. In this illustration, PGP Desktop, PGP Zip, and PGP Virtual Disk are supported.

Starting PGP Desktop

To start PGP Desktop, use any of the following methods:

- Double-click the **PGP Tray** icon.
- Right-click the **PGP Tray** icon, and then select **Open PGP Desktop**.
- From the **Start** menu, select **Programs > PGP > PGP Desktop**.



PGP Tray icon

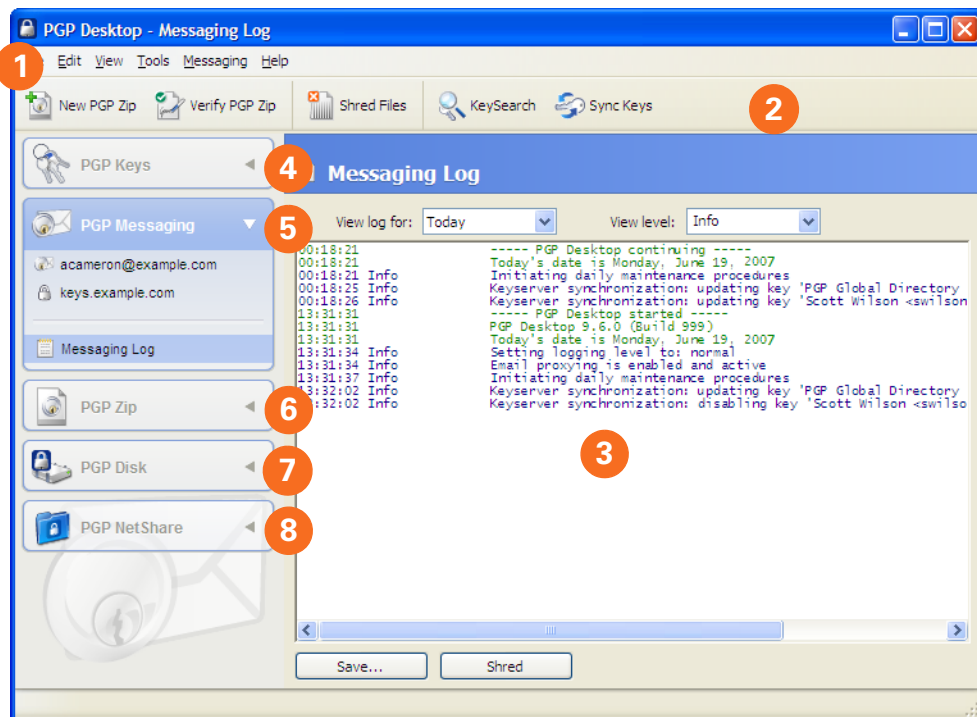
The PGP Desktop Main Screen

The PGP Desktop main screen gives you easy access to its features.



Depending on your license, you may not have access to certain components of PGP Desktop.

- 1 PGP Menu bar** — Provides access to all PGP Desktop features through its menus and commands.
- 2 PGP Toolbar** — Provides access to several commonly performed PGP Desktop tasks.
- 3 Work Area** — You configure the settings for the active feature in the **work area**.
This illustration shows the PGP Desktop Email work area with the Messaging Log selected.



- 4 PGP Keys Control Box** — Controls your PGP keys.
- 5 PGP Messaging Control Box** — Controls PGP Desktop Email.
- 6 PGP Zip Control Box** — Controls PGP Zip archives.
- 7 PGP Disk Control Box** — Controls PGP Virtual Disk volumes and PGP Whole Disk Encrypted drives.
- 8 PGP NetShare** — Controls PGP NetShare.

Using PGP Desktop Email

PGP Desktop Email automatically and transparently encrypts and signs outgoing messages and decrypts and verifies incoming messages. All you need to do is to send and receive your email just as you always have; PGP Desktop Email will take care of the rest.

Sending Encrypted Email

After installation, PGP Desktop Email inserts itself between your email client and your mail server and watches your email traffic.

When *incoming* messages arrive, PGP Desktop Email intercepts them before they get to your inbox and automatically attempts to decrypt and verify them; it uses your private keys to decrypt and the public keys of others to verify. When it is done with your messages, PGP Desktop Email delivers them to your inbox.

In most cases, you do not have to do anything special; decrypted incoming messages will appear in your inbox just like any other incoming messages.

When you send *outgoing* messages, PGP Desktop Email intercepts them on the way to your mail server and automatically attempts to encrypt and sign them, based on configured policies.

Again, you do not have to do anything special; just create your messages using your email client and send them—PGP Desktop Email handles everything else.

Details of how PGP Desktop Email transparently handles your incoming and outgoing messaging is found in the following sections.

Incoming Messages

PGP Desktop Email handles incoming messages based on their content:

- **Not encrypted or signed.** If a message is not encrypted or signed, PGP Desktop Email just passes it along to your email client. You can read the message as is, so there is nothing for PGP Messaging to do to it.
- **Encrypted but not signed.** If a message is encrypted, PGP Desktop Email attempts to decrypt it so that you can read it. It will look first on your keyring for the private key that can decrypt the message. If it finds the private key, PGP Desktop Email uses it to decrypt the message and then passes the message to your email client. If it cannot find the private key, PGP Desktop Email passes it to your email client still encrypted. It will look something like this.

```
-----BEGIN PGP MESSAGE-----
Version: PGP Desktop 9.6
```

```
qANQR1DBwUwDMvpgQkzA1HwBD/0f5F8QKTY+1NVzWQw4XQ/EPu0D0mLRZVVNVQVn
rYVHPo5Acn6C3ZfP0996akJRi0oBga62hklpkJq13QEGpBTqMP1F64TUXqHkPLNH
ISN+7ZEA7EYttv+3EPR0H6yQgJ+sqgm6sJRjddYYVTG6hGa9F2wX+ZDLAIK65rA
F4ZNQfNvkowMmJX578S27LEGE5d5wM68kKB/FF1vFYz1w360QgauIXmom9F8294p
fNawAnhQ1R1f/1a/Muys0wkTLQPdPBXhgZqVkaE85gsCwqXFMAGDEYfrsCabine
nRwJNTXsRYvpstmpNBZuvH01jkrXE4YEAPk48MD1Y154N3xywvury790dxd1Jh
o9yh9v5F07lorPLFcw8wmlX4gagds0VgddQRRfwbwmb9sdlj02cm1jyQc+bcy
3hZknIEgbb7GtKaK01c+jy9UsaFDh491A9qLHTwLHvYV/1wEBPFZPjyGvAcv
FGRDE08hyZKc/foQw1Imdo+nymZEQttTTdBCaESxmSV+jBwfn0xhuk/Evy1kAhm
n27x2m9pdwzxr1q1grxI8Lda7DTJWymA8o120C1QZqrqvAmqIKL4CpckyhPuRwIg
nan80KN/USfZK+v19juxM11S50GYZ0DTL6KnLGGpT1u6yLSU2SB711bve330ukJ
ZMLXqDLAKQFSITPMVekqJPXQrMrL1EYr6HE7fCAYmUmwX8w60e7H20wEIme2Y9V
eVOC5p9Iau7w987Ifbh1odeB+QEWJmavV5jBcae1ZhxAYLfrIdxBb1REeuQGjmJ
FUCHF68GgTp9H1Njw921R5QSintROh2KmwTa50GBDNNEAAQp8Si+6129FLpLgF
z7/wzmKfngv40gILxyPCrYs6Pbo30wAgJehhQDzC9kEkmd637t/caDEMUSnHC1
qTBASchRB+8eN5yrURZ5YUqhNvPR/vvN6odPeN4mbrMsc1v4uXRYsV5ofGHJT0U
=8hvs
```

```
-----END PGP MESSAGE-----
```

- **Signed but not encrypted.** If a message is signed, PGP Desktop Email attempts to verify the signature. It will look at the following locations in this order for the appropriate public key: your default keyring, the keyserver at keys.domain, where domain is the domain of the sender of the message, the PGP Global Directory (keyserver.pgp.com), any then other configured keyserver. If PGP Desktop Email finds the appropriate public key, it will attempt to verify the signature and then pass the message to your email client. If it cannot find the appropriate public key, it will pass the message to your email client unverified.
- **Encrypted and signed.** If a message is encrypted and signed, PGP Desktop Email will first try to find the private key to decrypt the message, then try to find the public key to verify it.

Outgoing Messages

PGP Desktop Email handles your outgoing email messages based on policies, sets of instructions that can be set up to handle any situation.

Default Policies

PGP Desktop Email includes four default policies:

- **Mailing List Admin Requests.** Administrative requests to mailing lists are sent in the clear; that is, not encrypted or signed.
- **Mail List Submissions.** Submissions to mailing lists are sent signed (so they can be authenticated) but not encrypted.
- **Require Encryption: [PGP] Confidential.** Any message flagged as confidential in your email client or containing the text "[PGP]" in the subject line must be encrypted to a valid recipient public key or it will not be sent. This policy gives you a way to easily handle messages that **must** be sent encrypted or not sent at all.
- **Opportunistic Encryption.** Specifies that any message for which a key to encrypt cannot be found should be sent without encryption (in the clear). Having this policy as the last policy in the list ensures that your messages will be sent (unless you flag the message as Confidential), albeit in the clear, even if a key to encrypt it to the recipient cannot be found.

Creating New Policies

PGP Desktop Email includes the ability to create and use new policies in addition to the four default policies. You can create policies based on a wide variety of criteria.

For complete information about how to create and implement messaging policies, refer to the *PGP Desktop User's Guide*.

Was My Message Encrypted?

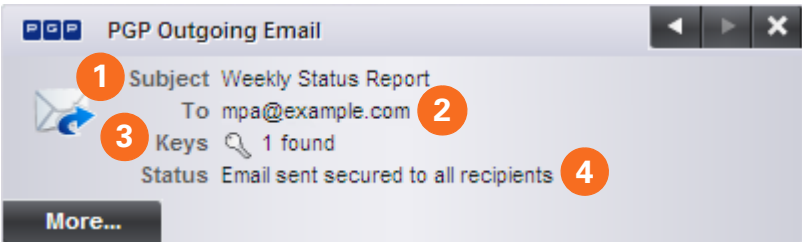
Because PGP Desktop Email does its work automatically and transparently, from time to time you may find yourself wondering, was my message really sent encrypted? The answer is probably yes, but there are ways to make certain.

Notifier Alerts

PGP Desktop Notifier alerts are a feature of PGP Desktop Email that both tell you what is going on with your messaging and give you control over it.

For example, when you send an encrypted message, the Notifier alert appears in the lower right corner of your screen. It shows:

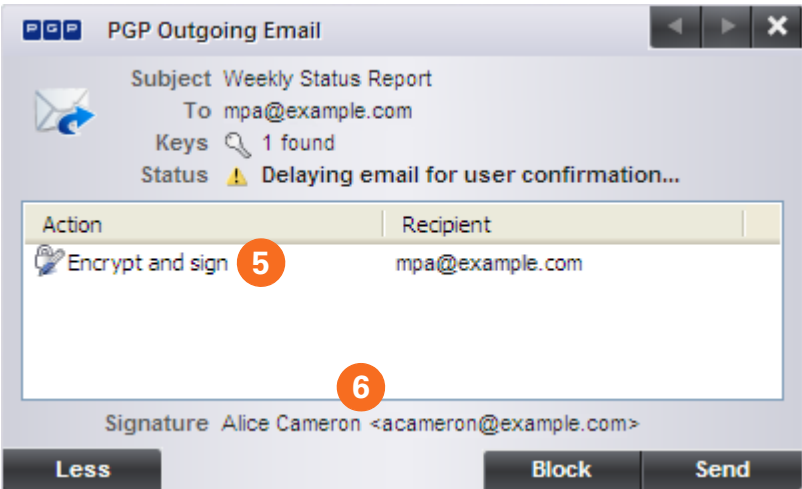
- 1 Subject.
- 2 Who it is being sent to.
- 3 Keys found for the recipient.
- 4 Status of the message.



If you want more information about the message being sent, click More. Now you also see:

- 5 What PGP Desktop Email did to the message.
- 6 Who signed the message.

For more information about Notifiers, refer to the *PGP Desktop User's Guide*.

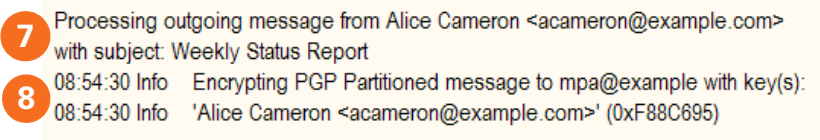


Messaging Log

The PGP Desktop Email Log lists a variety of actions that PGP Desktop Email is taking to secure your messaging.

For example, the message whose Notifiers are shown above generated this entry in the Messaging Log. It shows:

- 7 That an outgoing message was sent, who sent it, and what the subject was.
- 8 The time it was encrypted, the email address it was encrypted to, and the email address it was sent from.



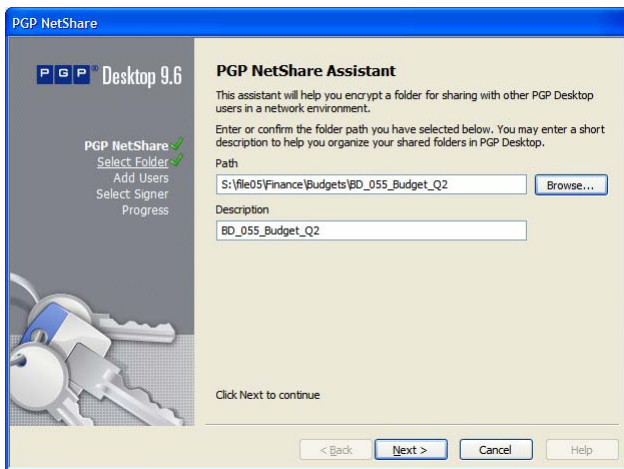
Using PGP NetShare

The PGP NetShare feature allows authorized users to share protected files. You must first create a Protected Folder and specify those users you want to be authorized to use the files.

- 1 Click **Add Folder** in the PGP NetShare Control Box.

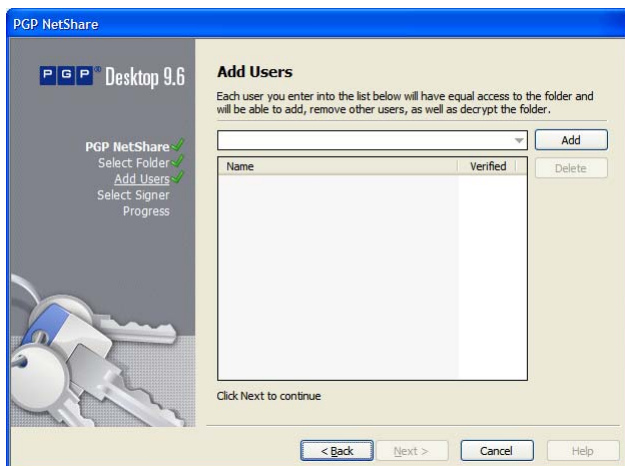


The **Select Folder** screen appears.



- 2 Click **Browse**, then select the folder you want to be the Protected Folder.
- 3 In the **Description** field, enter a description for the Protected Folder you are creating or leave blank to use the default name.
- 4 Click **Next**.

The **Add Users** screen appears.



- 5 To specify authorized users of the files in the Protected Folder, click the down-facing triangle, select a user, then click **Add**.

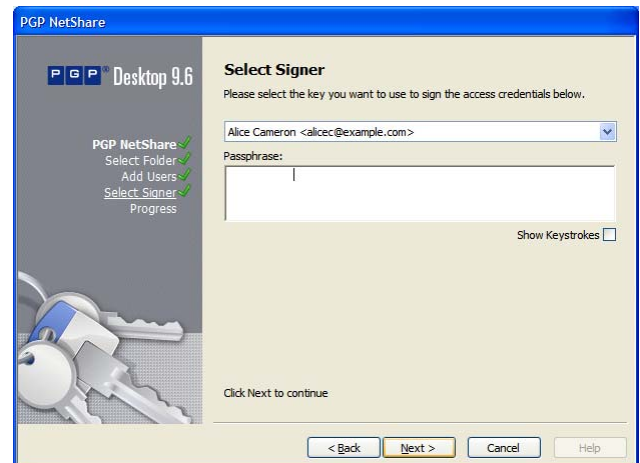
Remember to add yourself if you want to be authorized to access the files in the Protected Folder.



PGP NetShare does not notify authorized users that they can access the protected files; it is the responsibility of the creator of a new Protected Folder to notify authorized users.

- 9 Click **Next**.

The **Select Signer** screen appears.

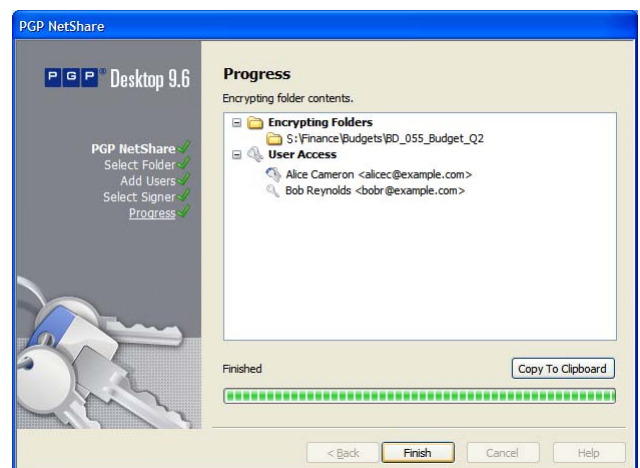


- 10 Select one private key from the private keys on the local keyring and enter the appropriate passphrase (if the passphrase is not cached).

This key will be used to secure the PGP NetShare configuration information for the Protected Folder and the files in it.

- 11 Click **Next**.

The **Progress** screen appears.



The files in the specified Protected Folder are encrypted and the specified users are authorized to use the files.

- 12 Click **Finish**.

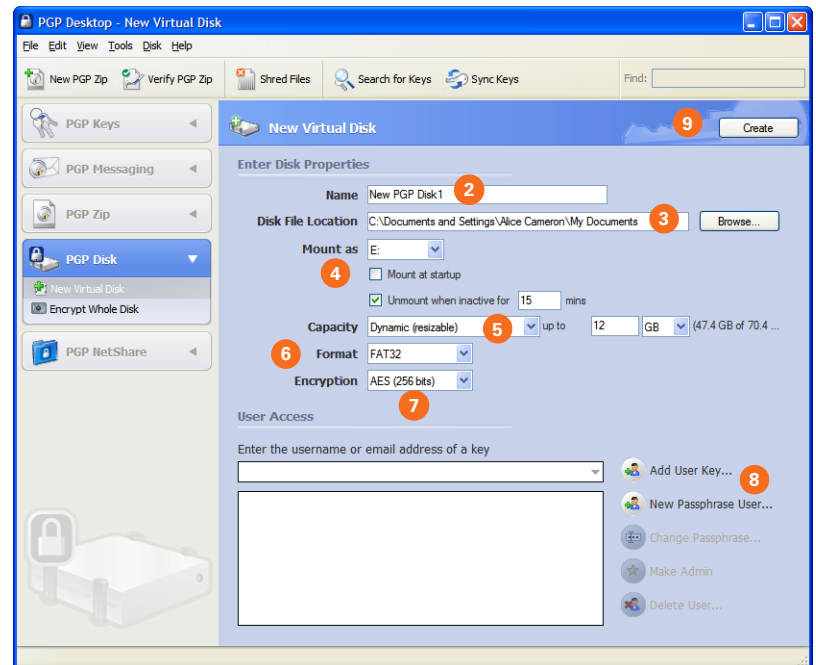
Creating PGP Virtual Disk Volumes

The PGP Virtual Disk Volumes feature uses part of your hard drive space as an encrypted virtual disk volume with its own drive letter. You can create additional users for a volume so that people you authorize can also access the volume.

- 1 Click **New Virtual Disk** in the PGP Disk Control box.

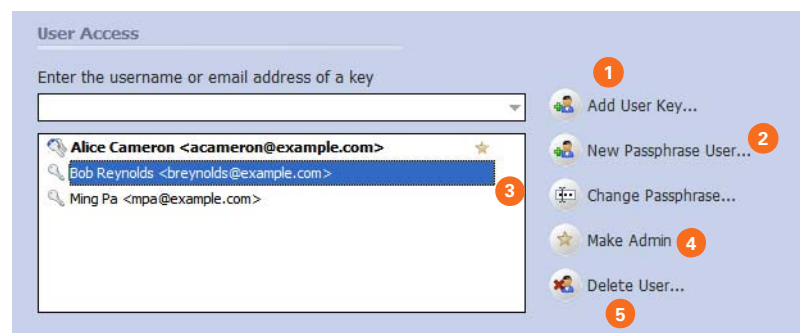


- 2 Type a **Name** for the volume.
- 3 Specify a **Disk File Location** for the volume.
- 4 Select your mount preferences:
 - select a drive letter for the volume to **Mount as**.
 - select **Mount at Startup** to have your new volume mount automatically at startup.
 - select **Unmount when inactive for x mins** to have the volume automatically unmount when it has been inactive for the specified number of minutes.
- 5 From **Capacity**, select **Dynamic (resizeable)** if you want the volume to grow in size as you add files or **Fixed size** if you want the volume to always remain the same size.
- 6 Specify a filesystem **Format** for the volume.
- 7 Specify an **Encryption** algorithm for the volume.
- 8 Click **Add User Key** to add users who authenticate using public-key cryptography or click **New Passphrase User** to add users who authenticate using passphrases.
- 9 Click **Create**.



Use the **User Access** section to control existing users of a PGP Virtual Disk volume:

- 1 Click **Add User Key** to add users who authenticate using public-key cryptography.
- 2 Click **New Passphrase User** to add users who authenticate using passphrases.
- 3 Select a passphrase user, then click **Change Passphrase** to change their passphrase.
- 4 Select a user, then click **Make Admin** to give the user administrative rights.
- 5 Select a user, then click **Delete** to delete the user.



PGP WDE Best Practices

PGP Corporation recommends the following best practices for preparing to encrypt your disk with PGP WDE. Please follow the recommendations below to protect your data during and after encryption.

Before you encrypt your disk, there are a few tasks you must perform to ensure successful initial encryption of the disk.

- 1 Determine whether your target disk is supported.** PGP WDE feature protects desktop or laptop disks (either partitions, or the entire disk), external disks, and USB flash disks. CD-RW/DVD-RWs and servers are NOT supported. See Chapter 6 of the *PGP Desktop User's Guide* for more details on what types of disks are supported.
- 2 Back up the disk before you encrypt it.** Before you encrypt your disk, be sure to back it up so that you won't lose any data if your laptop or computer is lost, stolen, or you are unable to decrypt the disk.
- 3 Ensure the health of the disk before you encrypt it.** If PGP WDE encounters disk errors during encryption, it will pause encryption so you can repair the disk errors. However, it is more efficient to repair errors before you initiate encryption. See [Ensure Disk Health Before Encryption](#) for more information.
- 4 Create a recovery disk.** While the chances are extremely low that a master boot record could become corrupt on a boot disk or partition protected by PGP Whole Disk Encryption, it is possible. Before you encrypt a boot disk or partition using PGP Whole Disk Encryption, create a recovery disk. See [Create a Recovery CD](#) for instructions on how to create a recovery disk.
- 5 Be certain that you will have AC power** for the duration of the encryption process. See [Maintain Power Throughout Encryption on page 11](#).
- 6 Run a pilot test to ensure software compatibility.** As a good security practice, PGP Corporation recommends testing PGP WDE on a small group of computers to ensure that PGP WDE is not in conflict with any software on the computer before rolling it out to a large number of computers. This is particularly useful in environments that use a standardized Corporate Operating Environment (COE) image. For a list of software known to have compatibility issues with PGP WDE, see [Run a Pilot Test to Ensure Software Compatibility on page 11](#).
- 7 Perform Disk Recovery on Decrypted Disks.** Where possible, as a best practice, if you need to perform any disk recovery activities on a disk protected with PGP Whole Disk Encryption (WDE), PGP Corporation recommends that you first decrypt the disk. Do this by using the **PGP Desktop Disk > Decrypt** option, your prepared PGP WDE Recovery Disk, or by connecting the hard disk via a USB cable to a second system and decrypting from that system's PGP Desktop software. Once the disk is decrypted, proceed with your recovery activities.

Ensure Disk Health Before Encryption

PGP Corporation deliberately takes a conservative stance when encrypting drives, to prevent loss of data. It is not uncommon to encounter Cyclic Redundancy Check (CRC) errors while encrypting a hard disk. If PGP WDE encounters a hard drive or partition with bad sectors, PGP WDE will, by default, pause the encryption process. This pause allows you to remedy the problem before continuing with the encryption process, thus avoiding potential disk corruption and lost data.

To avoid disruption during encryption, PGP Corporation recommends that you start with a healthy disk by correcting any disk errors prior to encrypting.

- Before you attempt to use PGP WDE, use a third-party scan disk utility that has the ability to perform a low-level integrity check and repair any inconsistencies with the drive that could lead to CRC errors. Microsoft Windows' check disk (chkdsk.exe) utility is not sufficient for detecting these issues on the target hard drive. Instead, use software such as SpinRite or Norton Disk Doctor™. These software applications can correct errors that would otherwise disrupt encryption.
- As a best practice, highly fragmented disks should be defragmented before you attempt to encrypt them.

Create a Recovery CD

The following instructions use Roxio software for illustration purposes. The actual steps you perform may differ.

- 1** Make sure PGP Desktop for Windows and Roxio Easy Media Creator or Roxio Easy CD Creator (or other software that can create a CD from an ISO image) are installed on your system.
- 2** Open Roxio Easy Media Creator or Roxio Easy CD Creator and choose to create a Data CD Project.
- 3** From the **File** menu, select **Record CD from CD Image**.
- 4** From the **Files of Type** menu, select **ISO Image Files (ISO)**.
- 5** Navigate to the PGP directory. The default is: **C:\Program Files\PGP Corporation\PGP Desktop**
- 6** Select **bootg.iso** and click **Open**.

- 7** Insert a blank, recordable CD into a CD drive on your system.
- 8** On the Record CD Setup screen, click **Start Recording**.
- 9** When the file is burned to the CD, click **OK**.
- 10** Remove the recovery CD from the drive and label it appropriately.



PGP WDE recovery disks are compatible only with the version of PGP Desktop that created the recovery CD. For example, if you attempt to use a 9.0.x recovery disk to decrypt a disk protected with PGP WDE 9.6 software, it will render the PGP WDE 9.6 disk inoperable.

PGP WDE Best Practices (continued)

Maintain Power Throughout Encryption

Because encryption is a CPU-intensive process, encryption cannot begin on a laptop computer that is running on battery power. The computer **must** be on AC power. If a laptop computer goes on battery power during the initial encryption process (or a later decryption or re-encryption process) PGP WDE pauses its activity. When you restore AC power, the encryption, decryption, or re-encryption process resumes automatically.

Regardless of the type of computer you are working with, your system must not lose power, or otherwise shut down unexpectedly, during the encryption process, unless you have selected the **Power Failure Safety** option.

Do not remove the power cord from the system before the encryption process is over. If loss of power during encryption is a possibility—or if you do not have an uninterruptible power supply for your computer—consider choosing the **Power Failure Safety** option, as described in the *PGP Desktop User's Guide*.



This holds true for removable disks, such as USB devices. Unless you have selected the **Power Failure Safety** option, you run the risk of corrupting the device if you remove it during encryption.

Run a Pilot Test to Ensure Software Compatibility

Certain other disk protection software is incompatible with PGP WDE and can cause serious disk problems, up to and including loss of data.

Please note the following known interoperability issues, and please review the PGP Desktop Release Notes for the latest updates to this list.

Software that is not compatible:

- **CompuTrace in MBR mode.** PGP Whole Disk Encryption is compatible only with the BIOS configuration of Absolute Software's CompuTrace laptop security and tracking product. Using CompuTrace in MBR mode is not compatible.


- **Utimaco Safeguard Easy 3.x** is incompatible with the PGP Whole Disk Encryption feature; do not install it on a system with PGP Desktop and do not install PGP Desktop on a system with Utimaco Safeguard Easy 3.x.
- **Hard disk encryption products from GuardianEdge Technologies:** Encryption Anywhere Hard Disk and Encryption Plus Hard Disk products, formerly known as PC Guardian products.

The following programs will co-exist with PGP Desktop on the same system, but will block the PGP Whole Disk Encryption feature:

- **Safeboot Solo**
- **SecureStar SCPP**
- **Pointsec.**

Using PGP WDE to Whole Disk Encrypt a Drive

The PGP WDE feature locks down the entire contents of your system or an external or USB flash drive you specify.

 PGP Corporation recommends, as a best practice, that you back up your data before encrypting your disk.

- 1 Click **Encrypt Whole Disk** in the **PGP Disk Control box**.



- 2 Select the drive or partition to be encrypted.

- 3 Select **Maximum CPU Usage** to protect your disk as quickly as possible. The encryption process will take priority over other operations on your system.

- 4 Select **Power Failure Safety** if you think your system could lose power during the encryption process.

When **Power Failure Safety** is selected, the encryption process can safely resume if it is interrupted. This option can cause encryption to take longer to complete.

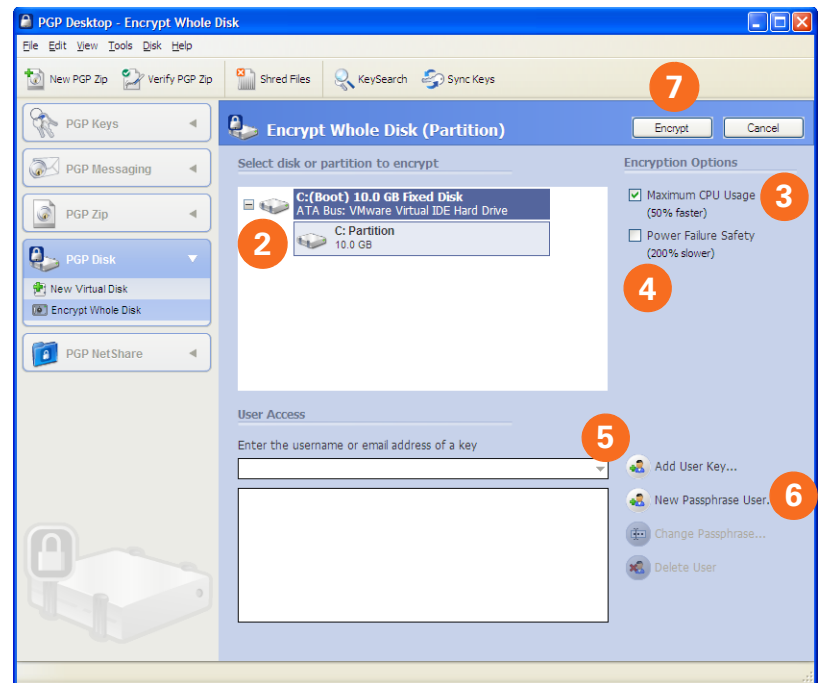
- 5 Click **Add User Key** to add users who will be able to authenticate to the whole disk encrypted drive using public-key cryptography.


If you are encrypting a fixed drive, you can only use a PGP keypair on an Aladdin eToken USB token. If you are encrypting a partition or a removable (non-fixed) drive, you can use any keypair on your system.


- 6 Click **New Passphrase User** to add users who authenticate using a passphrase.

If you are encrypting your boot drive, you have the option of using your Windows logon passphrase so that you only have to enter your credentials once on startup.

- 7 Click **Encrypt**.



 The encryption algorithm used by PGP WDE is AES256. The hashing algorithm is SHA-1. FAT16, FAT32, and NTFS formatted drives are supported. There is no minimum or maximum size. If the drive is supported by the operating system (or your hardware BIOS for the boot drive), it should work with PGP WDE.

 To encrypt data on floppy disks or CD-RWs, use PGP Virtual Disk volumes; do not use PGP WDE. Backup software works normally with PGP WDE; any files the software backs up will be decrypted *before* being backed up.

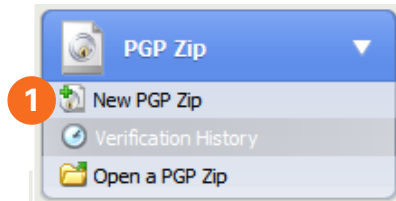
Creating a PGP Zip Archive

PGP Zip archives let you put any combination of files and folders into a compressed, portable archive. There are four kinds of PGP Zip archives:

- **Recipient keys.** Encrypts the archive to public keys. Only the holder of the corresponding private keys can open the archive. This is the most secure kind of PGP Zip archive. Recipients must be using PGP Messaging or PGP Desktop for Windows.
- **Passphrase.** Encrypts the archive to a passphrase, which must be communicated to the recipients. Recipients must be using PGP Messaging or PGP Desktop for Windows.
- **PGP Self-Decrypting Archive.** Encrypts the archive to a passphrase, but recipients do *not* need to be using PGP Messaging or PGP Desktop for Windows to open it. The passphrase must be communicated to the recipients.
- **Sign only.** Signs the archive but does not encrypt it, allowing you to prove you are the sender. Recipients must be using PGP Messaging or PGP Desktop for Windows to open and verify the archive.

The Passphrase and Sign only PGP Zip types are described in detail in the *PGP Desktop User's Guide*; they are described briefly here.

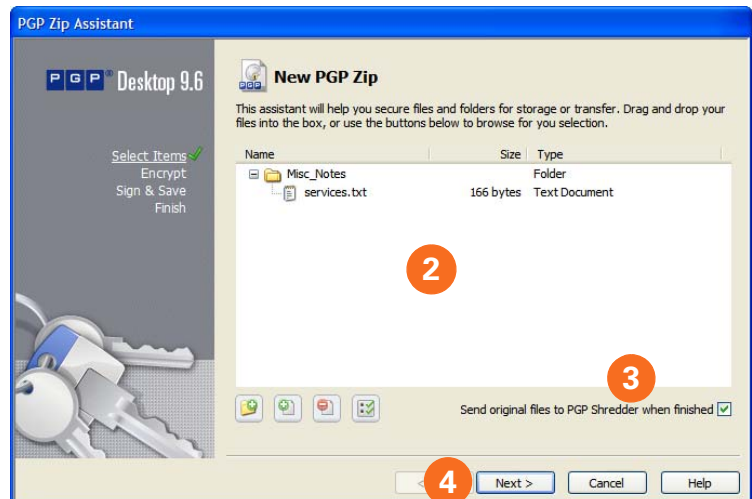
- 1 Click **New PGP Zip** in the PGP Zip Control Box.



- 2 Drag and drop the files/folders you want to be in the archive or use the buttons to select them.

- 3 Select **Send original files to PGP Shredder when finished** if you want the files/folders you put into the archive to be shredded when the archive is created.

- 4 Click **Next**.



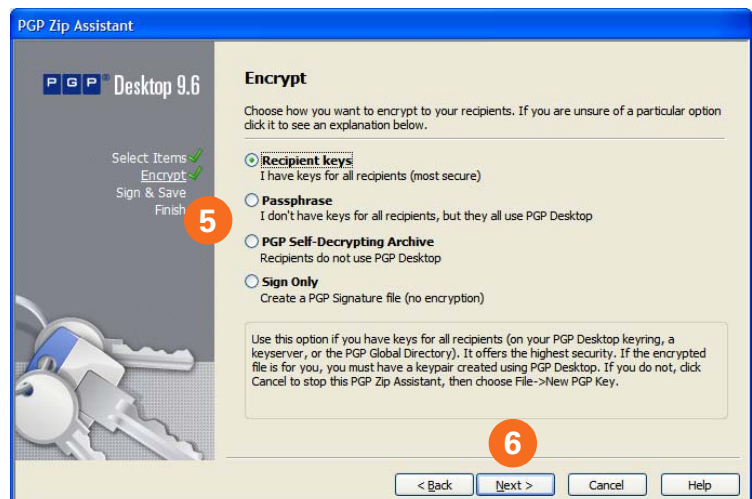
- 5 Select the desired kind of PGP Zip archive:

- **Recipient keys**
- **Passphrase**
- **PGP Self-Decrypting Archive**
- **Sign only**

- 6 Click **Next**.

Passphrase and **Sign only** are described in detail in the *PGP Desktop User's Guide*.

Refer to the appropriate section on the following pages for the kind of PGP Zip archive you specified.



Creating a PGP Zip Archive (continued)

Recipient Keys

The **Add User Keys** screen appears.

- 1 Click **Add** and use the **User Selection** screen to select the public keys of those persons who you want to be able to open the archive
If you want to be able to open the archive yourself, be sure to include your public key.

- 2 Click **Next**.

- 3 Choose a private key on the local system to use to sign the archive.

- 4 Specify a name and a location for the archive.
The default name is the name of the first file or folder in the archive; the default location is the location of the files/folders going into the archive.

- 5 Click **Next**.

The PGP Zip archive is created.

The **Finished** screen displays information about the new archive.

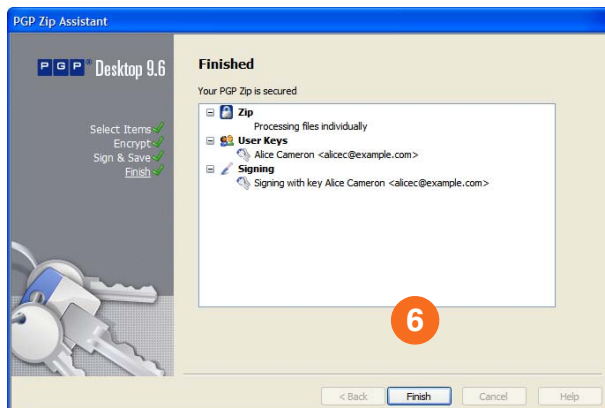
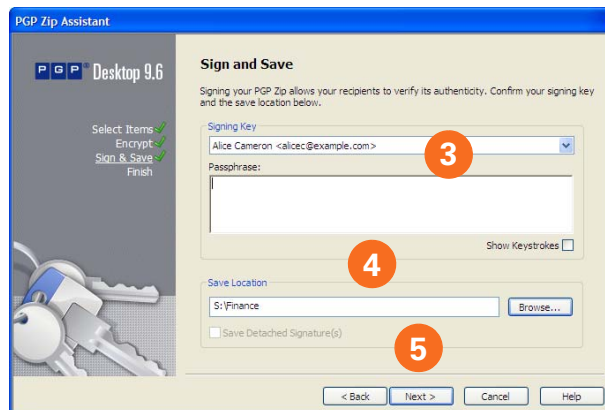
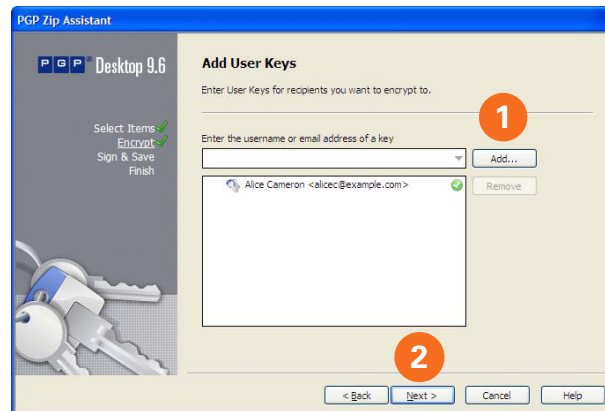
- 6 Click **Finish**.



The **Passphrase** type of PGP Zip archive is very similar to Recipient Keys, the difference being that a passphrase is used to protect the archive instead of a key.



The **Sign only** type of PGP Zip archive is similar to Recipient Keys, the difference being that because the archive is only signed, not encrypted, you do not select public keys.



Creating a PGP Zip Archive (continued)

PGP Self-Decrypting Archive

The **Create a passphrase** screen appears.

1 Enter a passphrase for the PGP Zip Self-Decrypting Archive (SDA), then confirm the passphrase by entering it again.

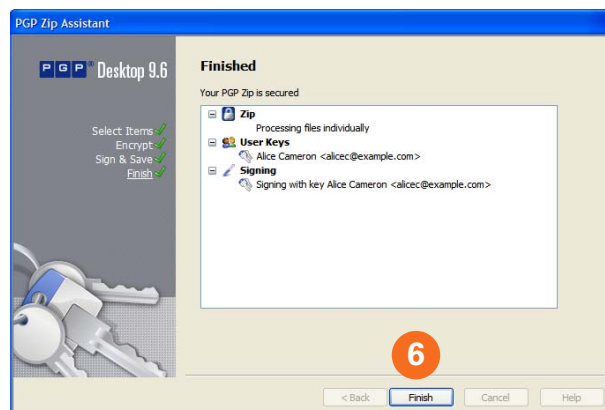
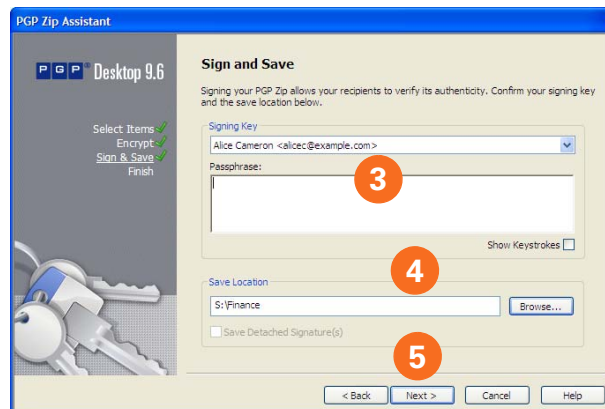
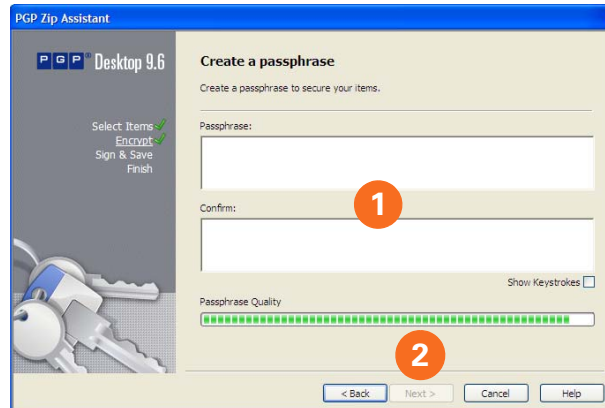
2 Click **Next**.

3 Choose a private key on the local system to use to sign the archive.

4 Specify a name and a location for the archive.
The default name is the name of the first file or folder in the archive; the default location is the location of the files/folders going into the archive.

5 Click **Next**.
The PGP SDA is created.

6 Click **Finish**.



Shredding Files

The PGP Shredder feature completely destroys files and folders so that even sophisticated file recovery software cannot recover them. While both the PGP Shredder icon and the Windows Recycle Bin appear on your desktop, only PGP Shredder immediately overwrites the files you specify so that they are not recoverable.

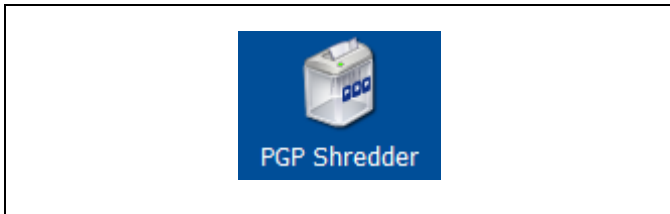
You can shred files using any of the following methods:

- Using the PGP Shredder icon.
- Using the PGP Toolbar.
- Using the PGP Context menu.

Using the PGP Shredder Icon

To shred files using the PGP Shredder icon:

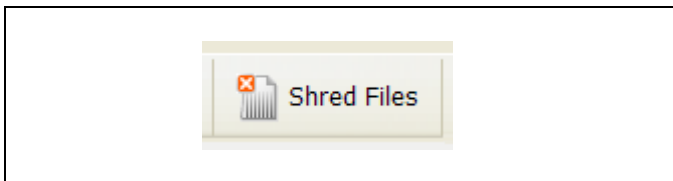
- 1 On your Windows desktop, drag the files and folders you want to shred into the PGP Shredder.
A dialog appears, asking you to confirm you want to shred the files.
- 2 Click **Yes**.
The specified files and folders are shredded.



Using the PGP Toolbar

To shred files using the PGP Toolbar:

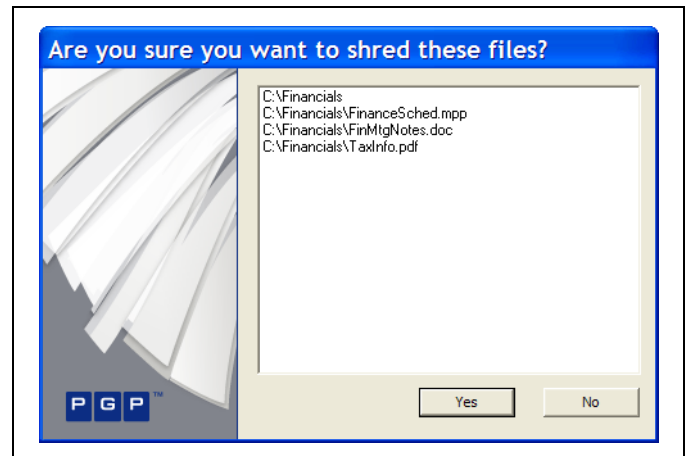
- 1 Open PGP Desktop.
- 2 Click **Shred Files** on the PGP Toolbar.
- 3 Specify which files you want to shred.
You can Control-click to select multiple files or Control-A to select all files showing.
- 4 Click **Open**.
A dialog appears, asking you to confirm you want to shred the files.
- 5 Click **Yes**.
The specified files and folders are shredded.





Using the PGP Context Menu

To shred files in Windows Explorer:

- 1 Open Windows Explorer.
- 2 Right-click on the files or folders you want to shred, then select **PGP Desktop > PGP Shred <filename>**.
You can Control-click to select multiple files or Control-A to select all files showing.
If you selected more than one file, the text says **PGP Shred x items**, where **x** is the number of files selected.
A dialog appears, asking you to confirm you want to shred the files.
- 3 Click **Yes**.
The specified files and folders are shredded.



 If you do not use the PGP Shredder feature often, you can remove the PGP Shredder icon from your desktop via PGP Options: access the **Options** panel, click on the **Disk** tab, deselect the **Place PGP Shredder icon on the desktop** option, then click **OK**.

 You can also use PGP Options to control the number of passes made when shredding (more passes is more secure but takes longer), whether files in the Windows Recycle Bin should be shredded when you empty it, and whether the warning dialog appears when you shred.

Shredding Free Space

The PGP Shred Free Space feature completely shreds free space on your drives so that your deleted data is truly unrecoverable. Keep in mind that “free space” is actually a misnomer. What PGP Shred Free Space does is overwrite the portions of your hard drive that Windows believes to be empty; in fact, that space could be empty or it could be holding files Windows told you were deleted.

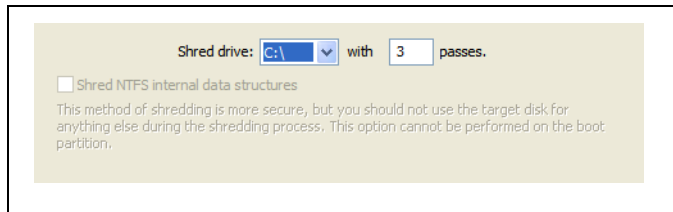
When you put files into the Windows Recycle Bin and empty it, the files are not really deleted; Windows just acts like there is nothing there and eventually overwrites the files. Until those files are overwritten, they are easy for an attacker to recover. PGP Shred Free Space overwrites this “free space” so that even disk recovery software cannot get those files back.

To shred free space on your disks:

- 1 From the **Tools** menu, select **PGP Shred Free Space**.
- 2 On the **Introduction** screen, read the information, then click **Next**.
- 3 On the **Gathering Information** screen, in the **Shred drive** box, select the disk or volume you want shredded and the number of passes you want PGP Shred Free Space to perform.

The recommended guidelines for passes are:

- 3 passes for personal use.
- 10 passes for commercial use.
- 18 passes for military use.
- 49 passes for maximum security.

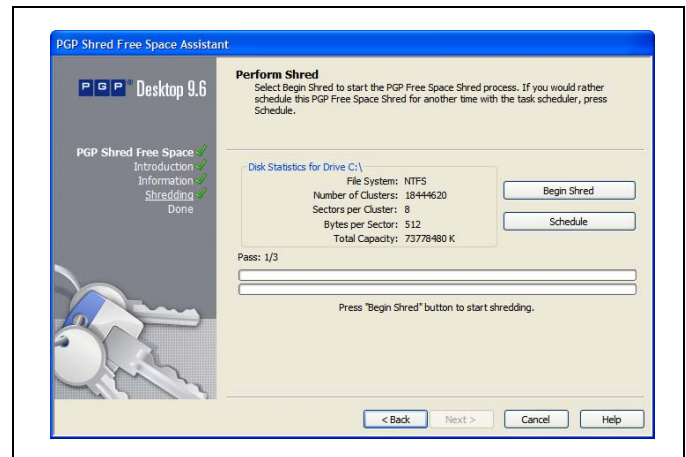


- 4 Choose whether to **Wipe internal NTFS data structures** (not available on all systems), then click **Next**.
This option shreds small (less than 1K) files in internal data structures that might otherwise not get shredded.
- 5 On the **Perform Shred** screen, click **Begin Shred**.



Click **Schedule** to schedule a shred of your free space instead of doing it now. The Windows Task Scheduler must be installed on your system.

The length of the shred session depends on the number of passes you specified, the speed of the processor, how many other applications are running, and so on.



- 6 When the shred session is complete, click **Next**.
- 7 On the **Completing** screen, click **Finish**.

For More Information

Getting Assistance

What product documentation is available?

These documents were installed onto your system when you installed the product:

- *PGP Desktop for Windows User's Guide*
- *PGP Desktop for Windows Release Notes*

A Help menu is available in the product for context-specific information.

How do I contact technical support?

- For PGP Corporation Product Support and Customer Service, please visit the PGP Support Portal: **<https://www.pgp.com/support>**.
- To access the PGP Support forums, please go to: **forums.pgpsupport.com**.
- For any other contacts at PGP Corporation, please go to the Contact Us section of the PGP website: **www.pgp.com/company/contact.html**.